



Original Article

Evaluation of the Remineralization Potential of an Herbal Non-fluoridated Dentifrice on Carious Lesions: An *In Vitro* Study

Paras Mull Gehlot^{1*}, Raghvendra Shanbhog², Nandlal Bhojraj³, Jyoti Singh⁴, Mahesh Katariya⁴, Prasun Bandyopadhyay⁴

¹Department of Conservative Dentistry and Endodontics, Member SIG Cariology, JSS Dental College and Hospital, Mysuru

²Department of Pediatric and Preventive Dentistry, Member SIG Cariology, JSS Dental College and Hospital, Mysuru

³Department of Pediatric and Preventive Dentistry, Head, SIG Cariology, JSS Dental College and Hospital, Mysuru

⁴Dabur Research & Development Centre, Ghaziabad, Uttar Pradesh, India

Article history:

Received: April 23, 2024

Revised: July 30, 2024

Accepted: July 30, 2024

Published: September 29, 2024

*Corresponding author:

Paras Mull Gehlot,

Email: dr.parasmullj@jssuni.edu.in

Abstract

Background: This *in vitro* study compared the remineralization potential of Dabur red (DR), a non-fluoridated herbal toothpaste, with Colgate Strong Teeth (CST), a fluoride-based toothpaste, on permanent teeth with artificially created white spot lesions. Vickers microhardness (VMH), quantitative light-induced fluorescence system (QLF), and scanning electron microscopy (SEM) were used for data analysis.

Methods: Enamel samples were prepared from the buccal surface of forty-five extracted maxillary premolars and subjected to demineralization to achieve adequate fluorescence loss (ΔF). The samples were divided into DR, CST, and control groups ($n=15$) and underwent 21 days of pH cycling. VMH was measured at baseline and after 21 days. QLF imaging was performed on days 7, 14, and 21. One randomly selected sample from each group underwent SEM examination to compare morphological variations. The statistical analysis was conducted using SPSS 22.0. Intra-group comparisons were made with repeated measures of analysis of variance (ANOVA), and one-way ANOVA with Tukey's post-hoc test was utilized for inter-group comparisons ($P<0.05$).

Results: Mean VHN increased significantly in all three groups from baseline (DR=40.47, CST=41.91, control=36.42) to the 21st day (DR=119.47, CST=120.36, control=74.36) ($P=0.00$). Significant differences were found between the control and test groups, but not between DR and CST. No statistically significant difference was observed in ΔF at baseline and 7 days, but there were significant differences among the groups at 14 and 21 days. SEM images revealed dense mineralization for both DR and CST.

Conclusion: After 21 days of *in vitro* remineralization, both DR and Colgate toothpaste demonstrated similar remineralizing potential as evaluated by surface MH and QLF.

Keywords: Remineralization, Herbal toothpaste, Microhardness, Artificial caries, Quantitative light-induced fluorescence



Please cite this article as follows: Gehlot PM, Shanbhog R, Bhojraj N, Singh J, Katariya M, Bandyopadhyay P. Evaluation of the remineralization potential of an herbal non-fluoridated dentifrice on carious lesions: an *In vitro* study. Avicenna J Dent Res. 2024; 16(3):161-169. doi:10.34172/ajdr.1858

Background

White spot lesions, the earliest stage of dental caries, are caused by the subsurface demineralization of enamel, appearing as opaque white areas due to mineral loss. Effective management is crucial in preventing the progression of cavitation. Remineralizing agents enhance the natural repair process by depositing minerals such as calcium (Ca) and phosphate (P) into the demineralized enamel, restoring mineral content, and improving optical properties to reduce the visibility of lesions. The formation and progression of caries are dynamic disease processes

that involve the demineralization and remineralization of enamel and dentin. The demineralization process is initiated when Ca and P ions disintegrate off the tooth surface owing to the secretion of organic acids by acidogenic bacteria in dental plaque at a critical pH (1). The effort to maintain healthy, strong teeth depends on the balance between demineralization and remineralization (1,2).

Saliva is a vital natural barrier against dental caries because it comprises a supersaturated Ca and P solution that neutralizes and dilutes the acid that



causes demineralization (2). However, this oral fluid-based natural remineralization process is not strong enough to endure prolonged exposure to intense acidic conditions. Remineralization is demonstrated to aid in these circumstances by an external supply of Ca and P ions, which are 20–30 times more abundant than those found in saliva (3,4). As a result, the remineralization of enamel by the use of several Ca-P-based agents, which are currently offered in a range of commercial formulations, has received extensive attention (5).

The consumer market has shown interest in herbal health goods. Considering that herbal toothpaste is derived from natural sources and has strong antibacterial qualities, some studies recommend using this production instead of synthetic toothpaste (6). The active antimicrobial ingredients and formulations of synthetic toothpastes with the presence of fluoride and other ingredients demonstrate their role in dental care. However, herbal toothpastes have been claimed to significantly reduce oral microbial load after brushing (6). Further, such products are sources of safer and more effective alternatives to chemical toothpaste (7).

The presence of a white-spot lesion is the initial clinical indication of dental caries, and its diagnosis is of prime importance. This is because these lesions can be reversed or arrested, thus reducing the disease's overall impact (8). Evaluating enamel demineralization and remineralization over time is made possible by several visual and non-destructive techniques (3,4).

Quantitative light-induced fluorescence system (QLF) is one such optical technology that has had extensive validation for its sensitivity and reliability (9,10). QLF works on the principle that enamel will auto-fluoresce in response to light. The loss of fluorescence observed in the demineralized enamel can be detected, quantified, and longitudinally monitored using the QLF.

Over the past few years, there has been a decline in the incidence of tooth demineralization as a result of improved oral hygiene practices and the development of newer toothpastes with improved remineralization potential. Fluoride is believed to be essential for enamel remineralization and cavity prevention, although it initiates the remineralization process only in the presence of sufficient Ca and P (11).

The remineralizing potential of fluoridated toothpastes is limited due to the low concentration of Ca and P in the saliva (12). According to published research, fluoride's remineralization activity rises in the presence of sufficient free Ca and P ions (13). There is also the potential for fluoride toxicity. A study by Grandjean and Landrigan classified fluoride as a human developmental neurotoxicant, similar to toxic metals such as lead (14). In addition, high fluoride levels should be avoided to reduce the risk of dental fluorosis in children (15).

Despite the abundance of remineralizing agents, exploring new strategies and evaluating various agents are crucial to enhancing the remineralization process. A

review of the literature found limited studies comparing the remineralizing potential of non-fluoridated herbal toothpaste with fluoridated toothpaste using microhardness (MH) and QLF analysis.

Hence, the present *in vitro* investigation aimed to compare the remineralizing potential of two commercially available types of toothpaste, namely, an herbal non-fluoridated toothpaste (Dabur Red, Dabur India Ltd.) and a fluoridated toothpaste (Colgate Strong Teeth, Colgate-Palmolive India Limited). This comparison was conducted *in vitro* using a surface MH test and the QLF method on artificial carious lesions. The results would help in understanding the caries-reducing effect of herbal, non-fluoridated toothpaste.

Materials and Methods

This *in vitro* comparative study was performed in the Department of Conservative Dentistry and Endodontics. Figure 1 summarizes the methodological steps involved in the study. A sample size of 15 per group was determined by taking data from related studies that have been published in the literature, using 80% power and a 95% confidence interval (9,12). The study was conducted with 2 interventional groups and 1 control group, each containing 15 samples (12,16,17).

Data Collection

One hundred freshly extracted maxillary pre-molars (indicated for orthodontic extraction) were collected and screened for inclusion in the study. The samples were provided by the Department of Oral and Maxillofacial Surgery. The collected samples were carefully cleansed of debris, calculus, and soft tissue before being evaluated for inclusion and exclusion criteria. After being cleaned in 0.1 M P buffer (pH=7.4) and rinsed with deionized water, the samples were refrigerated in distilled water at 4°C until use. The inclusion criteria were caries-free teeth, therapeutically extracted teeth, and teeth with baseline zero fluorescence loss (QLF screening). On the other hand, the exclusion criteria were teeth with hypoplastic lesions, teeth with intrinsic stains, teeth with abrasion, erosion, and attrition, teeth with developmental anomalies, and teeth with restoration.

Sample Preparation

A total of 45 enamel samples were obtained by decoronating the teeth at the crown-root junction and further sectioning the crown into two halves mesiodistally. A diamond disc (Diotech CH 9435, Swiss Dental Instruments) continuously irrigated with deionized water was used to section the teeth. The cut surface of the buccal half of the tooth specimens was then embedded 2 mm into autopolymerizing polymethyl methacrylate acrylic (DPI, India) resin using PVC cylindrical molds of height 20 mm and diameter 20 mm (Figure 2A).

The enamel samples were ground with 400-, 600-, and 1200-grit silicon carbide abrasive paper (Wolcut

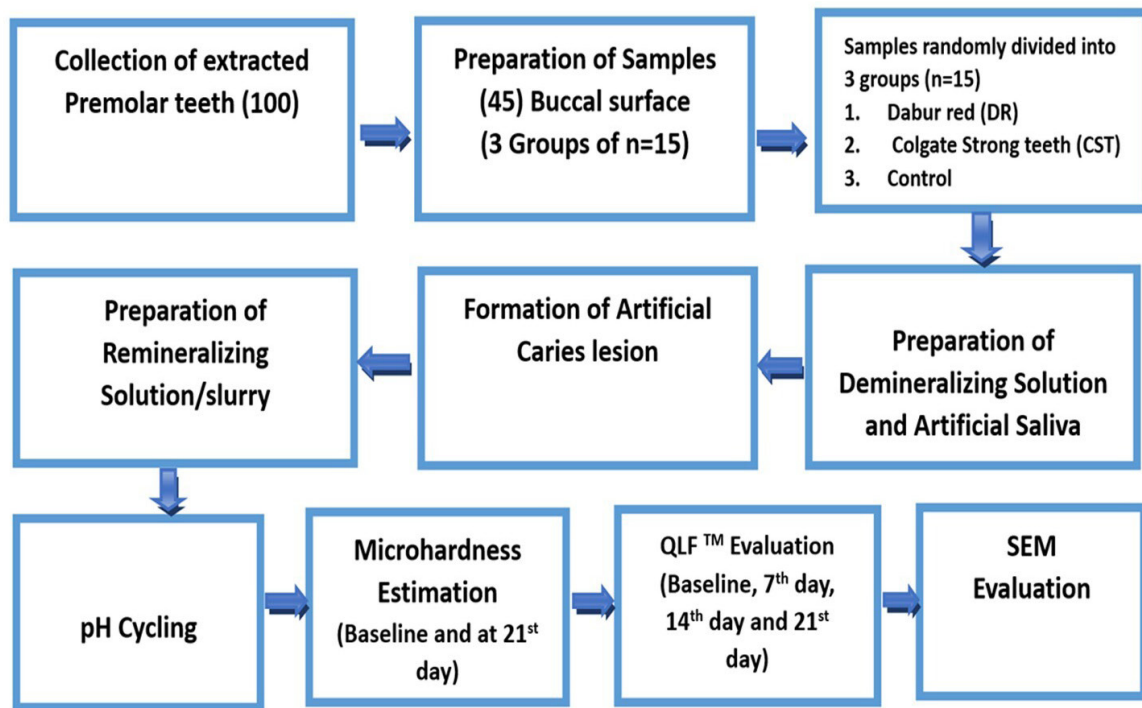


Figure 1. Flowchart Representing the Step-by-step Method

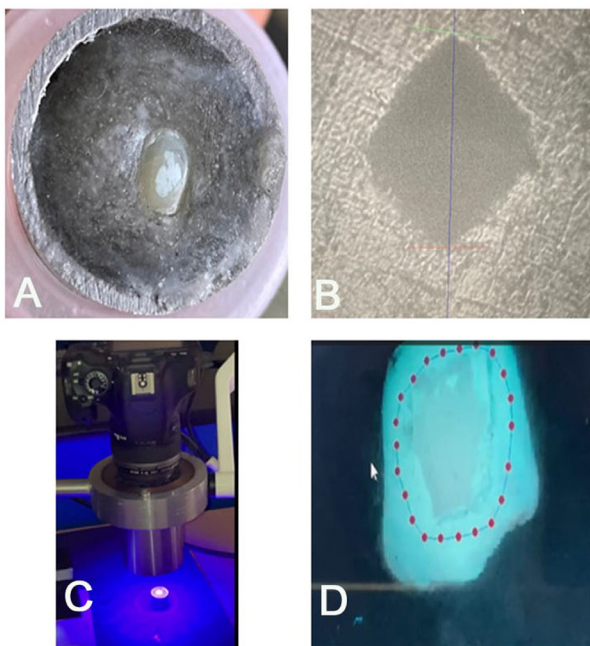


Figure 2. (A) Specimen After Demineralization (Baseline), (B) Microhardness Test, Indentation, (C) QLF Device [QLF-D Biluminator™ (Inspektor Research Systems BV, Amsterdam, The Netherlands)], and (D) Evaluation of QLF-D Images by QLF-D software. Note. QLF: Quantitative light-induced fluorescence system

Abrasives, Delhi, India) under water irrigation to obtain flat surfaces. The specimens were polished using felt paper (3 M, USA), dampened with 0.5 μ m diamond polishing paste (Ultradent Products, South Jordan, USA), and kept in distilled water until use.

The samples' surface was covered with an adhesive polyvinyl tape measuring 2 \times 2 mm, and a transparent

acid-resistant nail varnish (Lakme, India) was then applied. The adhesive tape was taken off when the varnish had dried out, leaving a 2 \times 2 mm window (Area of Interest) on the enamel surface.

Under a dental operating microscope (PICO, Zeiss, Germany), the region of interest was cleaned with a micro-brush. The samples were then inspected both clinically and digitally using QLF to ensure there were no apparent white spots, stained areas, or enamel malformations. New samples that satisfied the inclusion requirements were used to replace any damaged samples.

Formation of Artificial Caries Lesion

Demineralization was performed on each sample in order to produce artificial caries, or white spot lesions, *in vitro*. The literature suggests the use of a demineralization solution (pH = 5.0) for a 48-hour demineralization cycle (9,18,19). To standardize the demineralization process, the process was monitored round the clock using QLF™, and the demineralization process was stopped when a sample achieved an adequate ΔF value (% loss of fluorescence related to lesion depth). Each sample was kept separately in sterile plastic vials (40 mL capacity) filled with 10 mL of the demineralizing solution. All samples were kept in an incubator that was kept at 37 °C. A fresh demineralizing solution was made every day.

Preparation of the Demineralizing Solution

The demineralizing solution was prepared using the ten Cate and Duijsters protocol (18). The demineralizing solution was composed of 2.2 mM of Ca chloride, 2.2 mM of potassium dihydrogen orthophosphate, 0.05 mM of acetic acid, and distilled water with a pH of 4.5 adjusted

with sodium hydroxide (50%).

Preparation of Artificial Saliva

Artificial saliva was made using the technique described by Sato et al (20). Ingredients making up the artificial saliva, including Ca chloride (1.1 mM), magnesium chloride (0.08 mM), sodium carbonate (3.27 mM), Ca chloride (1.1 mM), sulfuric acid (0.05 mM), sodium P (3.90 mM), sodium chloride (4.29 mM), potassium chloride (17.98 mM), and 50% sodium hydroxide, were used to modify the pH of distilled water, which was 7.2.

Preparation of the Remineralizing Solution or Slurry

The manufacturer's instructions were followed for using the interventional agents. To replicate the expected level of dilution that occurs daily when dentifrice is used, the equivalent paste was diluted using artificial saliva at a ratio of 1:3.

pH Cycling

The study of pH cycling (Figure 3) was performed for 21 days for all the specimens in accordance with the modified protocol by Featherstone et al (21). The samples were submerged for 30 minutes and split into two 15-minute intervals in 10 mL of a freshly made demineralizing solution. Between the two demineralization steps, the samples were washed in deionized water and immersed in 10 mL of freshly prepared artificial saliva for 6 hours.

A single, trained operator treated the samples using the appropriate interventional agents in accordance with the manufacturer's guidelines. Then, the samples were stored in artificial saliva for 17.5 hours (overnight) at 37 °C in an incubator. This process was performed for 21 days.

Every specimen underwent QLF™ imaging and white spot analysis on the seventh, fourteenth, and twenty-first

days of the pH cycling (Figures 2C-D). Every specimen underwent testing for VMH at baseline (before pH cycling) and following 21 days of pH cycling.

Microhardness Estimation

All the samples were evaluated for surface MH at baseline and after pH cycling (at the end of 21 days). The MH of the specimens was evaluated using a Vickers hardness testing machine (VHM machine). With a load of 100 g and a dwell duration of 10 seconds, the Vickers' diamond indenter was gently applied to the test specimen using hydraulic damping. This produced a diamond pyramidal indentation, which was measured at 50X magnification using a digital scale (Figure 2B). Using a Vickers index unit formula, the computer automatically determined the surface MH; readings were generated as a Vickers hardness number (VHN). Each sample was indented three times, and the mean of the three readings was taken as the VHN of the specimen.

Quantitative Light-Induced Fluorescence™ Evaluation

To ensure that samples and the QLF™ camera were positioned consistently, a specially made jig was used to capture QLF images. The QLF-D Biluminator™ (Inspektor Research Systems BV, Amsterdam, the Netherlands) was utilized by a single qualified examiner to capture QLF™ pictures. The device is made up of a customized 60 mm macro lens attached to a *single-lens reflex* camera, four high-power white LEDs, and twelve powerful blue LEDs. Biluminator™ tubes focus light on the intended region of interest while accounting for ambient light. QLF™ and white-light digital images were taken from the buccal aspects of the specimens in a class 1 ASA darkroom condition. For white light photos, the shutter speed was 1/30 second, the aperture value was

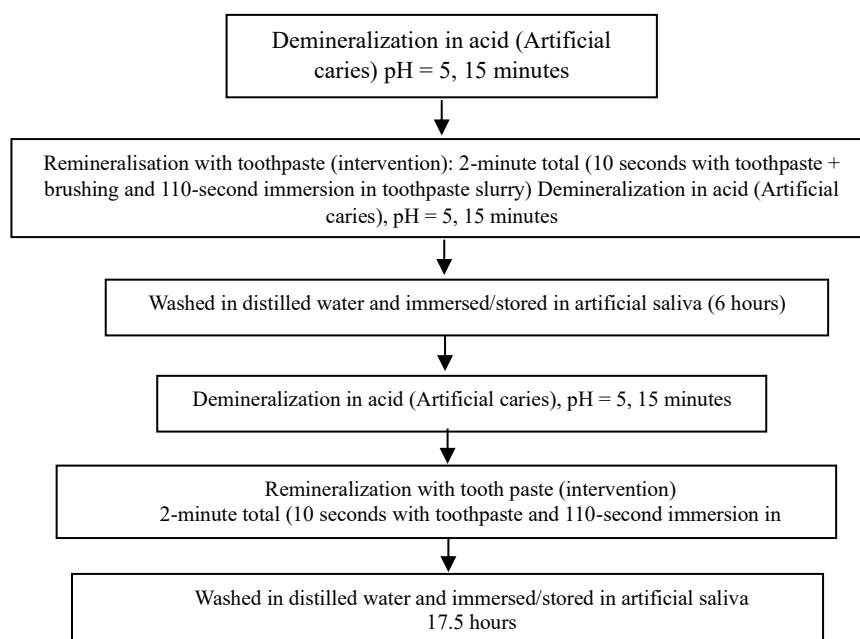


Figure 3. pH Cycle Flowchart

20.0, and the ISO speed was 1600; for blue light photos, the shutter speed was 1/10 second, the aperture value was 10.0, and the ISO speed was 1600 (Figure 2C).

With the use of a specially made jig, the specimen and QLF-D were kept at a distance of 1 cm and an angle of 90°. The captured images (QLF-D) were evaluated by dedicated software (QA2 version 1.26, Inspektor Research Systems BV, Amsterdam, the Netherlands).

For every image, white spot lesion analysis was performed using masking, reconstruction, and blurring techniques (Figure 2D). ΔF (percentage fluorescence loss with respect to the fluorescence of sound tooth tissue related to lesion depth), ΔF_{\max} (maximum percentage fluorescence loss with respect to the fluorescence of sound tooth tissue related to lesion depth), and ΔQ (percentage fluorescence loss with respect to the fluorescence of sound tissue times the area, related to lesion volume) were automatically computed as the mineral loss. The samples were rejected for any baseline fluorescence loss (ΔF , less than -5%) and were replaced with new samples. The QLF analysis was performed at four intervals, namely, baseline, 7 days, 14 days, and 21 days (Figure 4).

Scanning Electron Microscopy Evaluation

To compare morphological variations (surface change) between different groups, one specimen from each group was randomly selected for SEM examination. The specimen was coated with Au/Pd in an SPI-MODULE™ high-resolution sputter coater, mounted on the aluminum holder stubs using double-adhesive carbon tape, and inspected at 15 kV using an SEM (EVO[®] LS15, Carl Zeiss Microscopy GmbH, Goettingen, Germany).

Initially, the whole buccal surface of the sample was focused under the SEM's center beam at a magnification of

1–10X. Pictures were acquired with a magnification of 2000x.

Statistical Analysis

The data were tabulated and statistically analyzed using SPSS software (version 22.0). In addition, the data were analyzed for normality using the Shapiro-Wilk test, which revealed the normal distribution of the data. A repeated-measures ANOVA was used for intragroup comparisons, and a one-way ANOVA with Tukey's post-hoc was employed for intergroup comparisons. A P value < 0.05 was considered statistically significant.

Results

Microhardness (Vickers Microhardness)

In all three groups, there was a substantial rise in the mean VHN from the baseline to the 21st day of pH cycling (t-test, $P < 0.05$, Table 1). At 21-day MH analysis, the intergroup comparison (ANOVA) showed a statistically significant difference between the groups ($P < 0.05$). A significant difference was seen between the control and test groups. However, no significance was noted between the DR and CST (Tukey's honest significant difference test).

Quantitative Light-Induced Fluorescence Analysis

Loss of Fluorescence ΔF (%)

No statistically significant difference was found for baseline and 7-day intervals (Table 2). However, significant differences for 14 days and 21 days were observed among the groups. Comparing the groups at various intervals, a statistically significant difference was noted for each test group. For DR, the fluorescence loss at baseline and 7 days was statistically similar. Moreover, fluorescence loss at 14 days and 21 days was not significant. For CST, a significant difference in fluorescence loss was found

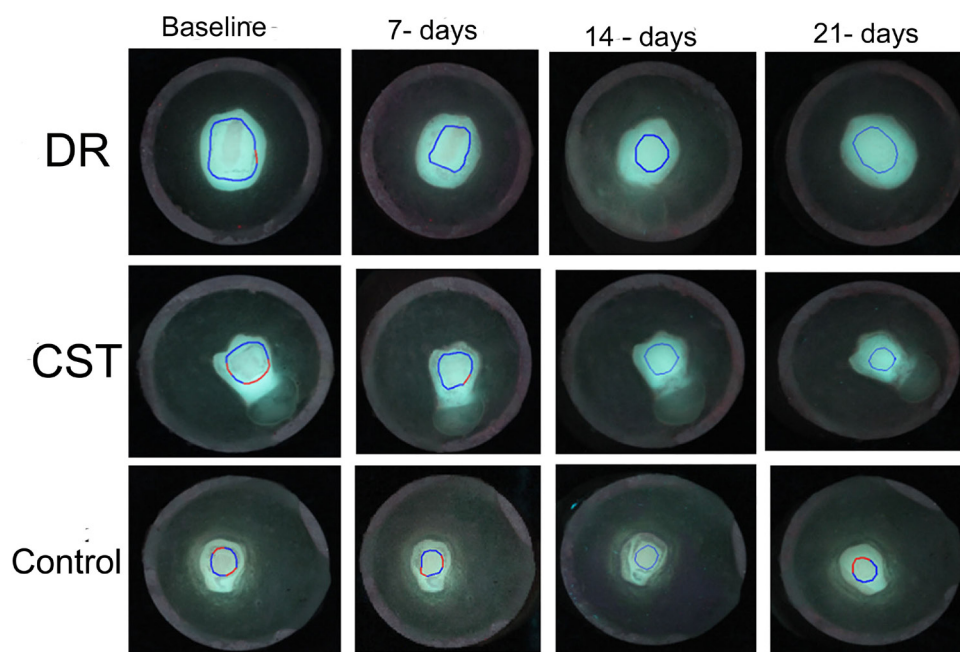


Figure 4. QLF Images for Test (DR and CST) and Control Groups at Various Intervals Evaluated by QLF Software. Note. QLF: Quantitative light-induced fluorescence system; DR: Dabur Red; CST: Colgate strong teeth

Table 1. Mean (SD), Mean Difference, and *P* values of Micro-hardness in VHN

Groups	Baseline MH (SD)	21-day MH (SD)	Mean Difference (SD)	P-value (Paired Sample t Test)
DR	40.47 (20.14)	119.47 (18.73) ^a	-78.99 (25.56)	0.00
CST	41.91 (15.81)	120.36 (30.83) ^a	-78.45 (31.03)	0.00
Control	36.41 (14.10)	74.36 (22.76) ^c	-37.95 (25.55)	0.00
ANOVA		<i>P</i> <0.05		

SD: Standard deviation; VHN: Vickers hardness number; MH: Microhardness; DR: Dabur red; CST: Colgate strong teeth; ANOVA: Analysis of variance. *P*<0.05 is significant.

Table 2. Mean (SD) Loss of Fluorescence or ΔF (%) *

Interval	DR	CST	Control	Group Comparison**
Baseline	-8.27 (1.69) ^{Aa}	-8.51 (1.35) ^{Aa}	-8.37 (1.54) ^{Aa}	<i>P</i> =0.911
7 days	-6.56 (1.39) ^{Aa}	-6.54 (0.83) ^{Ab}	-6.86 (0.9) ^{Ab}	<i>P</i> =0.533
14 days	-2.46 (3.14) ^{Ab}	-1.92 (2.61) ^{Ac}	-6.51 (2.03) ^{Bb}	<i>P</i> =0.00
21 days	-2.38 (3.04) ^{Ab}	-1.50 (2.59) ^{Ac}	-7.00 (1.86) ^{Bb}	<i>P</i> =0.00
Interval comparison***	<i>P</i> =0.00	<i>P</i> =0.00	<i>P</i> =0.00	

SD: Standard deviation; DR: Dabur red; CST: Colgate strong teeth.

* ΔF (%) represents a quantitative measurement of demineralization for a given tooth surface and is the average percentage of fluorescence loss relative to the fluorescence of sound tissue. Negative ΔF values indicate an increase in mineral loss. **Capital letter superscript compares the significance across various groups (Tukey B post hoc test). ***The small letter superscript compares the significance across various intervals for a given group (Tukey B post hoc test). *P*<0.05 is significant.

between baseline and 7 days and between 7 days and 14 days. In the control group, a significant difference was detected between baseline and 7 days, 14 days, or 21 days. Hence, compared to the control, both the test products could remineralize the demineralized tooth structure to an optimum level in the *in vitro* condition.

ΔF_{max} (%)

No statistically significant difference was noted among the test groups at baseline, 7-, 14-, and 21-day intervals (Table 3). However, specimens in the control group had more lesion depth compared to the test groups at 14 days and 21 days, which was statistically significant.

Statistically significant differences were observed when comparing the groups at various intervals. For DR and CST, the lesion depth decreased from baseline to 7 days and 14 days, respectively (*P*<0.05). However, no noticeable change was found in lesion depth from 14 days to 21 days (*P*>0.05). In the control group, a significant lesion depth reduction was noted between baseline and 7 days only (*P*<0.05), and no further changes were noted for 14 days or 21 days (*P*>0.05).

Scanning Electron Microscopy Findings

SEM micrographs at $\times 2000$ magnification of a representative sample from each group were obtained after 21 days of treatment (Figure 5). The control group's SEM micrographs revealed an enamel demineralization morphology that included porosities, an uneven slit and roughness pattern, and other signs of little remineralization. The images for DR and CST demonstrated dense mineralization.

Discussion

In recent years, there has been a significant increase in

public interest in alternative health care, which includes the use of herbal health products (22). Plant-extractable dentifrices have become popular recently due to the expanding field of alternative medicine. In recent years, herbal ingredients have been present in oral care products, particularly in South Asian countries (23).

Many producers of dental hygiene products have added a variety of herbal ingredients to their products, claiming that these ingredients replicate the advantages of commercially available toothpaste, including their capacity to combat plaque, improve breath, prevent decay, and prevent gum disease. Although herbal toothpastes significantly prevent or reduce various oral conditions such as gingivitis and halitosis, their role in remineralizing tooth structure and caries prevention has not been extensively studied yet (24).

In the present study, freshly prepared artificial saliva was prepared by the method described by Sato et al (18). Throughout the remineralization regimen, the saliva was replaced every 24 hours to guarantee pH maintenance and ionic equilibrium. Test groups' toothpaste slurries were used to simulate the dilution of the paste with saliva in the mouth (25).

The surface microhardness test is considered a well-established technique for assessing remineralization capacity in enamel, and surface hardness changes are appreciable after a few minutes of exposure to an acidic challenge. In addition, the indentations placed on enamel in the surface hardness test are not vulnerable to time-dependent changes in their morphology (26).

Various reports suggest changes in surface microhardness following the use of various herbal-based toothpastes (27,28). The findings of this investigation may be explained by the active herbal ingredients found in DR toothpaste, such as ginger and Garik powder.

Table 3. Mean (SD) of Maximum Lesion Depth or ΔF_{\max} (%) *

Interval	DR	CST	Control	Group Comparison**
Baseline	-17.99 (7.9) ^{Aa}	-19.15 (6.13) ^{Aa}	-17.08 (5.60) ^{Aa}	$P=0.709$
7 days	-9.48 (3.65) ^{Ab}	-9.4 (2.38) ^{Ab}	-11.47 (3.70) ^{Ab}	$P=0.124$
14 days	-3.38 (4.14) ^{Ac}	-2.49 (3.23) ^{Ac}	-10.88 (5.7) ^{Bb}	$P=0.000$
21 days	-3.20 (4.17) ^{Ac}	-1.76 (8.04) ^{Ac}	-10.14 (5.47) ^{Bb}	$P=0.000$
Interval comparison***	$P=0.00$	$P=0.00$	$P=0.00$	

SD: Standard deviation; DR: Dabur red, CST: Colgate strong teeth

* ΔF_{\max} (%) represents the maximal lesion depth. Negative ΔF_{\max} values indicate an increase in lesion depth. **Capital letter superscript compares the significance across various groups (Tukey B post hoc test). *** The small letter superscript compares the significance across various intervals for a given group (Tukey B post hoc test). $P<0.05$ is significant.

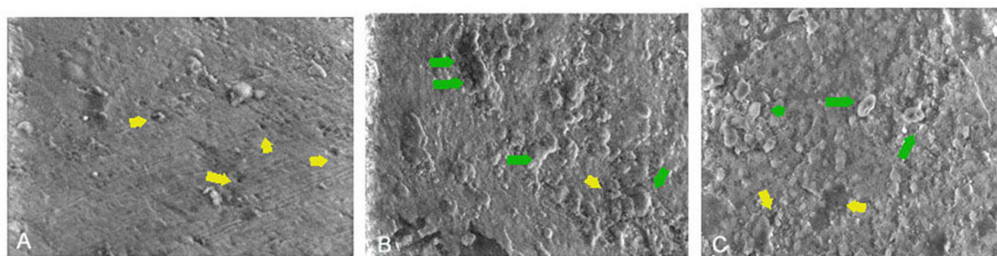


Figure 5. SEM Images: (A) Control: Enamel Demineralization Morphology With Evidence of Porosities (Yellow Arrows), (B) Dabur Red: Uniform Pattern of Slits and Roughness, Indicative of Dense Remineralization (Green Arrow) and Minimal Porosities, and (C) Colgate Strong Teeth: An Irregular Pattern of Slits and Roughness, Indicative of Remineralization (Green Arrow) and Minimal Porosities. Note. SEM: Scanning electron microscopy

Ginger has significant antibacterial and therapeutic properties, as demonstrated by earlier studies utilizing the rhizome of the plant (29). Studies on the remineralization potential of ginger have revealed that non-invasive treatment of artificially created early caries lesions with a ginger-containing solution resulted in enhanced remineralization and may have clinical benefits in caries management (30).

Furthermore, it is well known that dentifrices containing antimicrobial compounds are more effective in combating cariogenic bacteria (31). According to Mohan Kumar et al, toothpaste with several herbal constituents has a greater anti-cariogenic effect than toothpaste with fewer herbal ingredients (32). The DR also contains clove, which has anesthetic and antibacterial properties (33). The findings of a study confirmed that clove essential oil and its two major molecules prevent the demineralization brought on by the acidic beverage, or they might even encourage remineralization. The inhibition of the decalcification of the test compounds appears to be similar to the effect of fluoride treatment (34). The results for DR were statistically similar to those of a previous study, which concluded that DR had good remineralizing properties compared to other types of herbal toothpaste (24).

Notwithstanding their intrinsic differences, the findings of prior research demonstrated that QLF™ can be utilized as a tool for the identification and measurement of early white spot lesions in primary and permanent teeth without causing the sample's structure to break down (35,36).

There is a clear correlation between fluorescence and the amount of mineral content. A drop in fluorescence indicates a loss of minerals, making it possible to quantify the loss of minerals (37). The ΔF and ΔF_{\max} for samples treated with CST and DR were similar at

baseline and 7 days, but CST had less mineral loss at 14 days and 21 days. However, this was not statistically significant. However, the results of a study by Yadav et al represented that, compared to fluoridated toothpaste, minimal remineralization occurred with non-fluoridated toothpaste, and this was attributed to the low Ca (wt%) and P (wt%) ratios between the demineralizing and remineralizing groups, based on energy-dispersive X-ray analysis (25). In the present study, this Ca/P ratio was similar for all the groups. The reason for the similar Ca/P ratio in the control group could be attributed to the presence of fluoride in artificial saliva (25). This difference could be due to the difference in the substrate (dentin) and the experimental setup.

Fluoride-containing toothpaste remineralizes teeth by forming an acid-resistant, hypermineralized layer of fluorapatite-like material. Saliva and other topical sources provide Ca and P ions that are seeded to build the fluorapatite layer (38). For mineral deposition to take place inside the lesion's body, there must be a sufficient level of Ca and P ions to break through the surface layer (39). Both test groups provided an adequate reservoir of Ca/P to facilitate remineralization.

The limitations of remineralization strategies include limited penetration depth and time, efficacy variation, material stability, and clinical evidence. The limitation of the present study is its *in vitro* nature, and future long-term clinical studies are required to corroborate the results.

Conclusion

Within the limitations of this *in vitro* study, it could be concluded that after 21 days of *in vitro* remineralization, evaluated by surface microhardness and QLF, both the

DR and Colgate demonstrated similar remineralizing potential. In the remineralization of artificially carious lesions, it was found that herbal dentifrice was equally efficient as non-herbal dentifrices.

Acknowledgments

The authors would like to thank Vijnana Bhavana, the central instrumentation facility of the University of Mysore, for facilitating the SEM analysis for providing the study samples.

Authors' Contribution

Conceptualization: Paras Mull Gehlot, Raghvendra Shanbhog, Jyoti Singh, Mahesh Katariya.

Data curation: Paras Mull Gehlot, Raghvendra Shanbhog, Jyoti Singh, Mahesh Katariya, Prasun Bandyopadhyay.

Formal analysis: Paras Mull Gehlot, Nandlal Bhojraj, Raghvendra Shanbhog, Mahesh Katariya, Prasun Bandyopadhyay.

Funding acquisition: Paras Mull Gehlot, Raghvendra Shanbhog, Nandlal Bhojraj.

Investigation: Paras Mull Gehlot, Raghvendra Shanbhog, Nandlal Bhojraj.

Methodology: Paras Mull Gehlot, Raghvendra Shanbhog, Jyoti Singh, Mahesh Katariya.

Project administration: Jyoti Singh, Nandlal Bhojraj, Mahesh Katariya, Prasun Bandyopadhyay.

Resources: Jyoti Singh, Prasun Bandyopadhyay, Mahesh Katariya, Paras Mull Gehlot, Nandlal Bhojraj.

Software: Paras Mull Gehlot, Raghvendra Shanbhog, Nandlal Bhojraj.

Supervision: Raghvendra Shanbhog, Nandlal Bhojraj, Jyoti Singh, Prasun Bandyopadhyay.

Validation: Raghvendra Shanbhog, Nandlal Bhojraj, Jyoti Singh, Mahesh Katariya.

Visualization: Paras Mull Gehlot, Raghvendra Shanbhog, Nandlal Bhojraj, Jyoti Singh, Mahesh Katariya, Prasun Bandyopadhyay.

Writing—original draft: Paras Mull Gehlot, Jyoti Singh, Raghvendra Shanbhog.

Writing—review & editing: Raghvendra Shanbhog, Nandlal Bhojraj, Jyoti Singh, Mahesh Katariya, Prasun Bandyopadhyay, Paras Mull Gehlot.

Competing Interests

This work was financially supported by the Dabur Research and Development Centre, Ghaziabad, Uttar Pradesh, India, as part of a consultancy project with JSS Dental College and Hospital, Mysuru, India. No authors from JSS Dental College received any consultancy fees.

Ethical Approval

The procedure protocol was reviewed and approved by the Institutional Research Ethics Committee of JSS Dental College and Hospital (IEC protocol No. 56/2022).

Funding

The study received financial support from the Dabur Research and Development Centre (Dabur India, DCH/RD/22-23/1).

References

1. Featherstone JD. Dental caries: a dynamic disease process. *Aust Dent J.* 2008;53(3):286-91. doi: [10.1111/j.1834-7819.2008.00064.x](https://doi.org/10.1111/j.1834-7819.2008.00064.x).
2. Menon LU, Varma RB, Kumaran P, Xavier AM, Govinda BS, Kumar JS. Efficacy of a calcium sucrose phosphate-based toothpaste in elevating the level of calcium, phosphate ions in saliva and reducing plaque: a clinical trial. *Contemp Clin Dent.* 2018;9(2):151-7. doi: [10.4103/ccd.ccd_562_17](https://doi.org/10.4103/ccd.ccd_562_17).
3. Hara AT, Zero DT. The potential of saliva in protecting against dental erosion. *Monogr Oral Sci.* 2014;25:197-205. doi: [10.1159/000360372](https://doi.org/10.1159/000360372).
4. Rogerson MJ. The role of a calcium sucrose phosphate-calcium orthophosphate complex in the reduction of dental caries. *Aust Dent J.* 1973;18(3):160-6. doi: [10.1111/j.1834-7819.1973.tb03454.x](https://doi.org/10.1111/j.1834-7819.1973.tb03454.x).
5. Karad A, Dhole P. Evaluation of remineralizing efficacy of calcium sucrose phosphate: a systematic review of in vitro studies. *J Indian Orthod Soc.* 2019;53(3):171-82. doi: [10.1177/0301574219862499](https://doi.org/10.1177/0301574219862499).
6. Bhattacharjee S, Nath S, Bhattacharjee P, Chouhan M, Deb B. Efficacy of toothpastes on bacteria isolated from oral cavity. *Int J Med Public Health.* 2018;8(2):89-92. doi: [10.5530/ijmedph.2018.2.19](https://doi.org/10.5530/ijmedph.2018.2.19).
7. Amoian B, Moghadamnia AA, Mazandarani M, Amoian MM, Mehrmanesh S. The effect of *Calendula* extract toothpaste on the plaque index and bleeding in gingivitis. *Res J Med Plant.* 2010;4(3):132-40. doi: [10.3923/rjmp.2010.132.140](https://doi.org/10.3923/rjmp.2010.132.140).
8. Selwitz RH, Ismail AI, Pitts NB. Dental caries. *Lancet.* 2007;369(9555):51-9. doi: [10.1016/s0140-6736\(07\)60031-2](https://doi.org/10.1016/s0140-6736(07)60031-2).
9. Pretty IA, Edgar WM, Higham SM. Detection of in vitro demineralization of primary teeth using quantitative light-induced fluorescence (QLF). *Int J Paediatr Dent.* 2002;12(3):158-67. doi: [10.1046/j.1365-263x.2002.00357.x](https://doi.org/10.1046/j.1365-263x.2002.00357.x).
10. Ando M, van Der Veen MH, Schemehorn BR, Stookey GK. Comparative study to quantify demineralized enamel in deciduous and permanent teeth using laser- and light-induced fluorescence techniques. *Caries Res.* 2001;35(6):464-70. doi: [10.1159/000047491](https://doi.org/10.1159/000047491).
11. Bansal K, Balhara N, Marwaha M. Remineralizing efficacy of Calceon fluorica tablets on the artificial carious enamel lesions using scanning electron microscope and surface microhardness testing: in vivo study. *Indian J Dent Res.* 2014;25(6):777-82. doi: [10.4103/0970-9290.152204](https://doi.org/10.4103/0970-9290.152204).
12. Juntavee A, Juntavee N, Hirunmoon P. Remineralization potential of nanohydroxyapatite toothpaste compared with tricalcium phosphate and fluoride toothpaste on artificial carious lesions. *Int J Dent.* 2021;2021:5588832. doi: [10.1155/2021/5588832](https://doi.org/10.1155/2021/5588832).
13. Reynolds EC, Cai F, Cochrane NJ, Shen P, Walker GD, Morgan MV, et al. Fluoride and casein phosphopeptide-amorphous calcium phosphate. *J Dent Res.* 2008;87(4):344-8. doi: [10.1177/154405910808700420](https://doi.org/10.1177/154405910808700420).
14. Grandjean P, Landrigan PJ. Neurobehavioural effects of developmental toxicity. *Lancet Neurol.* 2014;13(3):330-8. doi: [10.1016/s1474-4422\(13\)70278-3](https://doi.org/10.1016/s1474-4422(13)70278-3).
15. Martinez-Mier EA, Shone DB, Buckley CM, Ando M, Lippert F, Soto-Rojas AE. Relationship between enamel fluorosis severity and fluoride content. *J Dent.* 2016;46:42-6. doi: [10.1016/j.jdent.2016.01.007](https://doi.org/10.1016/j.jdent.2016.01.007).
16. Veeramani R, Shanbhog R, Priyanka T, Bhojraj N. Remineralizing effect of calcium-sucrose-phosphate with and without fluoride on primary and permanent enamel: Microhardness and quantitative-light-induced-fluorescence™ based in vitro study. *Pediatr Dent J.* 2021;31(1):51-9. doi: [10.1016/j.pdj.2020.12.001](https://doi.org/10.1016/j.pdj.2020.12.001).
17. Suryani H, Gehlot PM, Manjunath MK. Evaluation of the remineralisation potential of bioactive glass, nanohydroxyapatite and casein phosphopeptide-amorphous calcium phosphate fluoride-based toothpastes on enamel erosion lesion - an ex vivo study. *Indian J Dent Res.* 2020;31(5):670-7. doi: [10.4103/ijdr.IJDR_735_17](https://doi.org/10.4103/ijdr.IJDR_735_17).
18. ten Cate JM, Duijsters PP. Alternating demineralization and remineralization of artificial enamel lesions. *Caries Res.* 1982;16(3):201-10. doi: [10.1159/000260599](https://doi.org/10.1159/000260599).
19. Stookey GK, Featherstone JD, Rapozo-Hilo M, Schemehorn BR, Williams RA, Baker RA, et al. The Featherstone laboratory pH cycling model: a prospective, multi-site validation

- exercise. *Am J Dent.* 2011;24(5):322-8.
20. Sato Y, Sato T, Niwa M, Aoki H. Precipitation of octacalcium phosphates on artificial enamel in artificial saliva. *J Mater Sci Mater Med.* 2006;17(11):1173-7. doi: [10.1007/s10856-006-0545-4](https://doi.org/10.1007/s10856-006-0545-4).
 21. Featherstone JD, Mellberg JR. Relative rates of progress of artificial carious lesions in bovine, ovine and human enamel. *Caries Res.* 1981;15(1):109-14. doi: [10.1159/000260508](https://doi.org/10.1159/000260508).
 22. Vyas YK, Bhatnagar M, Sharma K. In vitro evaluation of antibacterial activity of an herbal dentifrice against *Streptococcus mutans* and *Lactobacillus acidophilus*. *Indian J Dent Res.* 2008;19(1):26-8. doi: [10.4103/0970-9290.38928](https://doi.org/10.4103/0970-9290.38928).
 23. Abhishek KN, Supreetha S, Sam G, Khan SN, Chaithanya KH, Abdul N. Effect of neem containing toothpaste on plaque and gingivitis—a randomized double blind clinical trial. *J Contemp Dent Pract.* 2015;16(11):880-3. doi: [10.5005/jp-journals-10024-1776](https://doi.org/10.5005/jp-journals-10024-1776).
 24. Gomathi MS, Prasad SV, Iyer K, Jegadeson M, Indrapriyadhrshini K, Shrienitha DN. Remineralizing effect of commercially available two herbal dentifrices on human teeth-an in vitro evaluation. *J Indian Assoc Public Health Dent.* 2023;21(1):22-6. doi: [10.4103/jiaphd.jiaphd_171_21](https://doi.org/10.4103/jiaphd.jiaphd_171_21).
 25. Yadav RK, Bharti D, Tikku AP, Verma P, Shakya VK, Pandey P. Comparative evaluation of remineralizing effect of fluoride and nonfluoride agents on artificially induced caries using different advanced imaging techniques. *J Conserv Dent.* 2022;25(1):26-31. doi: [10.4103/jcd.jcd_426_21](https://doi.org/10.4103/jcd.jcd_426_21).
 26. Wongkhantee S, Patanapiradej V, Maneenut C, Tantbirojn D. Effect of acidic food and drinks on surface hardness of enamel, dentine, and tooth-coloured filling materials. *J Dent.* 2006;34(3):214-20. doi: [10.1016/j.jdent.2005.06.003](https://doi.org/10.1016/j.jdent.2005.06.003).
 27. Bilgin Göçmen G, Yanikoglu F, Tagtekin D, Stookey GK, Schemehorn BR, Hayran O. Effectiveness of some herbals on initial enamel caries lesion. *Asian Pac J Trop Biomed.* 2016;6(10):846-50. doi: [10.1016/j.apjtb.2016.08.005](https://doi.org/10.1016/j.apjtb.2016.08.005).
 28. Kudva S, Prabhakar S, Pai V, Tegginamani A. Effects of garlic extract on salivary pH: a clinical study. *Arch Orofac Sci.* 2012;7(1):1-8.
 29. Premkishore K, Umapathy T, Kathariya MD, Agrawal A, Kumar PP, Kallampilly G. Effect of honey and aqueous ginger extract against *Streptococcus mutans* isolated from extracted carious deciduous teeth. *J Indian Acad Oral Med Radiol.* 2013;25(4):265-7.
 30. Celik ZC, Yavlal GO, Yanikoglu F, Kargul B, Tagtekin D, Stookey GK, et al. Do ginger extract, natural honey and bitter chocolate remineralize enamel surface as fluoride toothpastes? An in-vitro study. *Niger J Clin Pract.* 2021;24(9):1283-8. doi: [10.4103/njcp.njcp_683_20](https://doi.org/10.4103/njcp.njcp_683_20).
 31. Sunitha J, Ananthalakshmi R, Jeeva JS, Jeddy N, Dhakshinamoorthy S, Muthu Meenakshi RM. Antimicrobial effect of herbal dentifrices: an in vitro study. *J Pharm Bioallied Sci.* 2015;7(Suppl 2):S628-31. doi: [10.4103/0975-7406.163575](https://doi.org/10.4103/0975-7406.163575).
 32. Mohankumar KP, Priya NK, Madhushankari GS. Anti cariogenic efficacy of herbal and conventional tooth pastes - a comparative in-vitro study. *J Int Oral Health.* 2013;5(2):8-13.
 33. Alqareer A, Alyahya A, Andersson L. The effect of clove and benzocaine versus placebo as topical anesthetics. *J Dent.* 2006;34(10):747-50. doi: [10.1016/j.jdent.2006.01.009](https://doi.org/10.1016/j.jdent.2006.01.009).
 34. Marya CM, Satija G, J A, Nagpal R, Kapoor R, Ahmad A. In vitro inhibitory effect of clove essential oil and its two active principles on tooth decalcification by apple juice. *Int J Dent.* 2012;2012:759618. doi: [10.1155/2012/759618](https://doi.org/10.1155/2012/759618).
 35. Kim HE, Kim BI. An in vitro comparison of quantitative light-induced fluorescence-digital and spectrophotometer on monitoring artificial white spot lesions. *Photodiagnosis Photodyn Ther.* 2015;12(3):378-84. doi: [10.1016/j.pdpdt.2015.06.006](https://doi.org/10.1016/j.pdpdt.2015.06.006).
 36. Veeramani R, Shanbhog R, Bhojraj N, Kaul S, Anoop NK. Evaluation of mineral loss in primary and permanent human enamel samples subjected to chemical demineralization by international caries detection and assessment system II and quantitative light-induced fluorescence™: an in vitro study. *J Indian Soc Pedod Prev Dent.* 2020;38(4):355-60. doi: [10.4103/jisppd.jisppd_181_20](https://doi.org/10.4103/jisppd.jisppd_181_20).
 37. Dang MH, Jung JE, Lee DW, Song KY, Jeon JG. Recovery of acid production in *Streptococcus mutans* biofilms after short-term fluoride treatment. *Caries Res.* 2016;50(4):363-71. doi: [10.1159/000446408](https://doi.org/10.1159/000446408).
 38. Shounia TY, Atwan S, Alabduljabbar R. Using silver diamine fluoride to arrest dental caries: a new approach in the US. *J Dent Oral Biol.* 2017;2(18):1105.
 39. Mei ML, Ito L, Cao Y, Lo EC, Li QL, Chu CH. An ex vivo study of arrested primary teeth caries with silver diamine fluoride therapy. *J Dent.* 2014;42(4):395-402. doi: [10.1016/j.jdent.2013.12.007](https://doi.org/10.1016/j.jdent.2013.12.007).